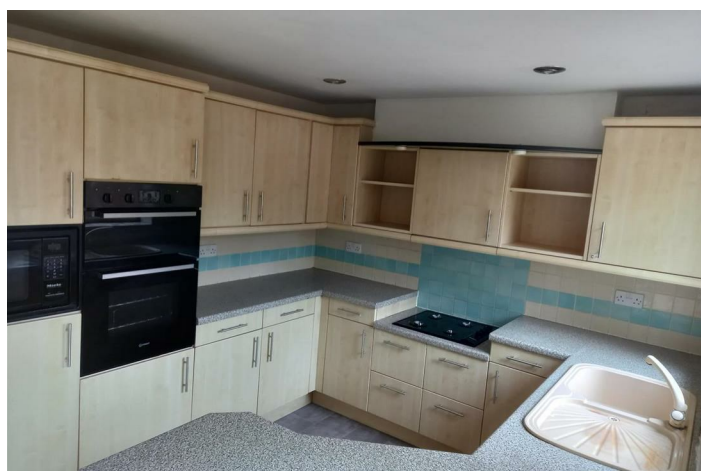


CUL-DE-SAC LOCATION



House - Terraced (EPC Rating: D)

**WOODLANDS, EVESHAM, WR11 1XQ**

PCM

**£1,200**

**AVON**  
ESTATES  
SALES & LETTINGS



3



1



2



D

# 3 Bedroom House - Terraced located in Evesham

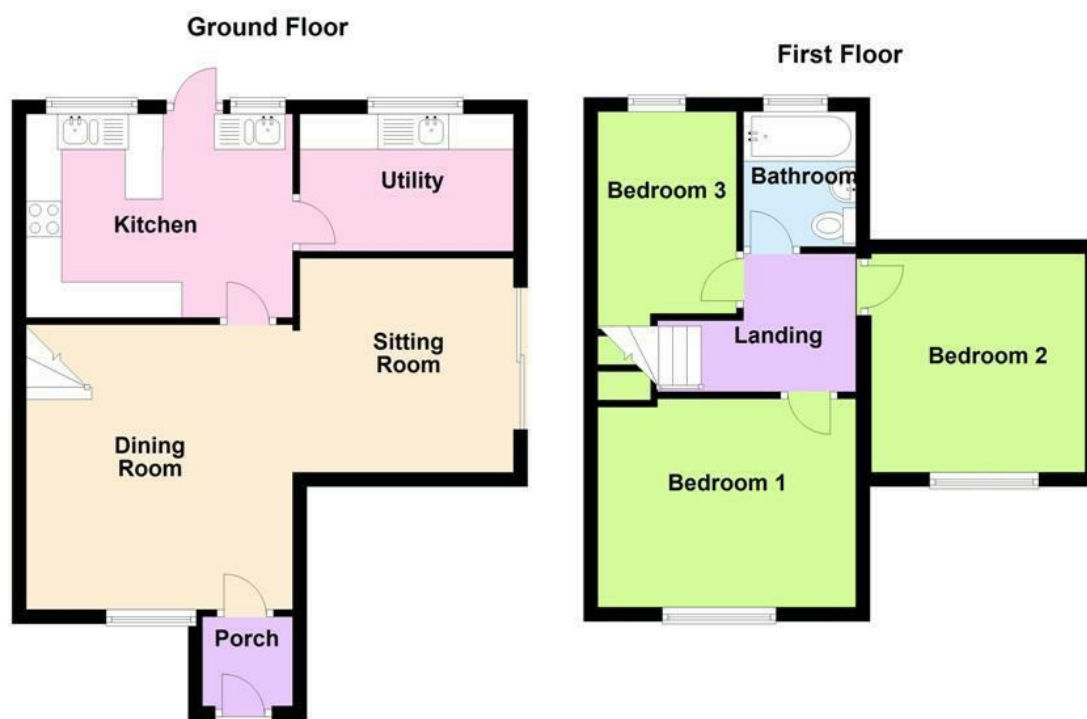
LET AGREED-An extended three-bedroom end terrace home situated on a large corner plot in a cul-de-sac location. The accommodation briefly comprises of open plan living area, kitchen/breakfast room, utility room, three bedrooms, bathroom and walled garden to the rear and the side.

Council Tax Band - C

Energy Performance Rating - D

Deposit: £1,380.00, which is returnable in full subject to the satisfactory condition of the property at the end of the term.

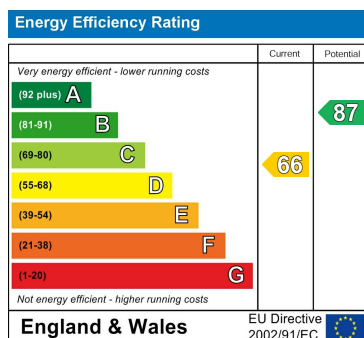
Holding Deposit - £275.00 (no VAT) may be requested to secure a property (subject to references, contract & landlords approval). Non-refundable if the tenant withdraws. Otherwise used towards first rent or deposit, after signing the tenancy agreement.



Council Tax Band

**D**

Energy Performance Graph



Call us on

**01386 257180**

[lettings@avonestates.net](mailto:lettings@avonestates.net)

[www.avonestates.net](http://www.avonestates.net)

Agents Note: Whilst every care has been taken to prepare these particulars, they are for guidance purposes only. All measurements are approximate and are for general guidance purposes only and whilst every care has been taken to ensure their accuracy, they should not be relied upon and potential buyers are advised to recheck the measurements.